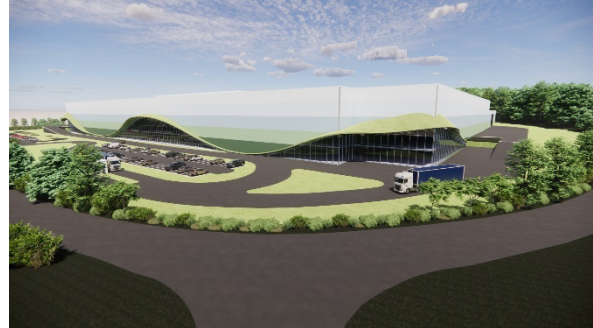


News Release

Date: 2nd June 2025

Rochford chosen for ‘CLIMATE POSITIVE’ housing factory

HEMSPAN® has selected Rochford as the first of three UK locations for a new housing manufacturing facility each capable of producing 2,000 homes annually.



The new factory represents a major investment in the Rochford area, creating approximately 350 direct jobs and an estimated 175 indirect roles in the local supply chain. HEMSPAN® will work in partnership with local schools and colleges to provide skills training opportunities for younger generations in the community.

At the heart of this initiative is HEMSPAN®’s innovative BIOHAUS® building system which enables ‘climate positive’ homes to be delivered at scale. These homes not only achieve net-zero carbon emissions but go further, removing additional carbon dioxide from the atmosphere upon completion. Once occupied, they generate all the energy they require, significantly reducing household energy bills.

BIOHAUS® is an offsite manufactured MMC (Modern Methods of Construction Category 2) building system with components made in the factory, shipped to site and then erected. It is a whole-house bio-based panel system, using hemp as the main material.



Matthew Belcher, HEMSPAN® founder and CEO, said: “This factory will deliver economies of scale through volume and vertical integration, allowing us to produce high-performance, climate-positive homes at a cost comparable to conventional construction.”

The initial outlet for the new factory will be nearby Rochford Park, a proposed 2,000-home ‘forest’ development. This landmark scheme is set to become the first large-scale ‘climate positive’ community in the UK.

Belcher continued: “Rochford was selected for the first facility due to the availability of local materials, skilled labour and proximity to Baltic Wharf.

“The factory and Rochford Park are both significant investments and will certainly impact positively on the local economy and help set a new standard for sustainable development in the UK.”

A planning application for the factory and Rochford Park is being prepared and will be submitted later this year.

Ends